

We Keep You Working!



\$889

12.35 CFM @ 100 PSI
3.5 HP, 230/1
60 Gallon Tank
Q13160V



\$775

7.1 CFM @ 100 PSI
2 HP, 115/1
26 Gallon Tank
Q12126VP



\$649

7.1 CFM @ 100 PSI
2HP, 115/1
20 Gallon Tank
Q12120P



\$2,459

17.2 CFM @ 175 PSI
5HP, 230/1
80 Gallon Tank
QTV5-80-1-PRO



\$2,695

QT7.5-14K-30-PRO

- 14 HP Kohler Engine
- 23.2 CFM @ 175 PSI
- 30 Gallon Tank



\$3,089

QT7.5-13H-30-PRO

- 13 HP Honda Engine
- 23.6 CFM @ 175 PSI
- 30 Gallon Tank

BURTON LOCATIONS

Air Center 973-3260 · Weslaco 968-0515
Brownsville 546-5175 · Harlingen 423-9460
McAllen 686-3725 · Edinburg 380-1665 · Pharr 787-4283



AUTHORIZED
DISTRIBUTOR

Rotary Screw Compressors

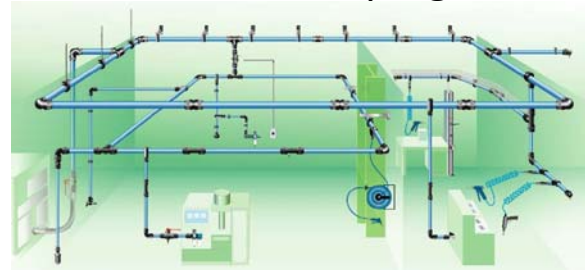
Available
5HP to 350HP

Description	Base	Tank Mounted	Tank & Dryer Mounted
5 HP, 230/1 5 HP, 208,230,460,3 16.6 CFM @ 150 PSI	 QGS5B-1 \$4,380 QGS5B \$4,150	 QGS5-1 \$4,839 QGS5 \$4,595 60 Gallon Tank	 QGS5WD-1 \$6,059 QGS5WD \$5,925 60 Gallon Tank
7.5 HP, 230/1 7.5 HP, 208,230,460,3 21.2 CFM @ 150 PSI	QGS7.5B-1 \$5,190 QGS7.5B \$4,500	QGS7.5-1 \$5,925 QGS7.5 \$5,195 60 Gallon Tank	QGS7.5WD-1 \$7,159 QGS7.5WD \$6,485 60 Gallon Tank
10 HP, 208,230,460,3 37 CFM @ 125 PSI	QGS10B \$5,675	QGS10 \$6,520 120 Gallon Tank	QGS10WD \$8,065 120 Gallon Tank
15 HP, 208,230,460,3 52 CFM @ 125 PSI	QGS15B \$6,439	QGS15 \$7,560 120 Gallon Tank	QGS15WD \$9,695 120 Gallon Tank
20 HP, 208,230,460,3 84 CFM @ 125 PSI	QGS20B \$11,350	QGS20 \$12,665 120 Gallon Tank	QGS20WD \$14,695 120 Gallon Tank
25 HP, 208,230,460,3 99 CFM @ 125 PSI	QGS25B \$11,795	QGS25 \$12,995 120 Gallon Tank	QGS25WD \$15,495 120 Gallon Tank
30 HP, 208,230,460,3 122 CFM @ 125 PSI	QGS30B \$12,395	QGS30 \$13,600 120 Gallon Tank	QGS30WD \$15,995 120 Gallon Tank

COMPRESSED AIR ACCESSORIES

Air Dryers 	FRLs 	Air Reels 	Air Tools 
--	--	---	---

Transair Piping



BURTON LOCATIONS

Air Center 973-3260 · Weslaco 968-0515
 Brownsville 546-5175 · Harlingen 423-9460
 McAllen 686-3725 · Edinburg 380-1665 · Pharr 787-4283

Notice: prices good while supplies last